

## Installing Tally.ERP 9 - Single User

---



You can install Tally.ERP 9 using one of the following methods:

### Method 1:

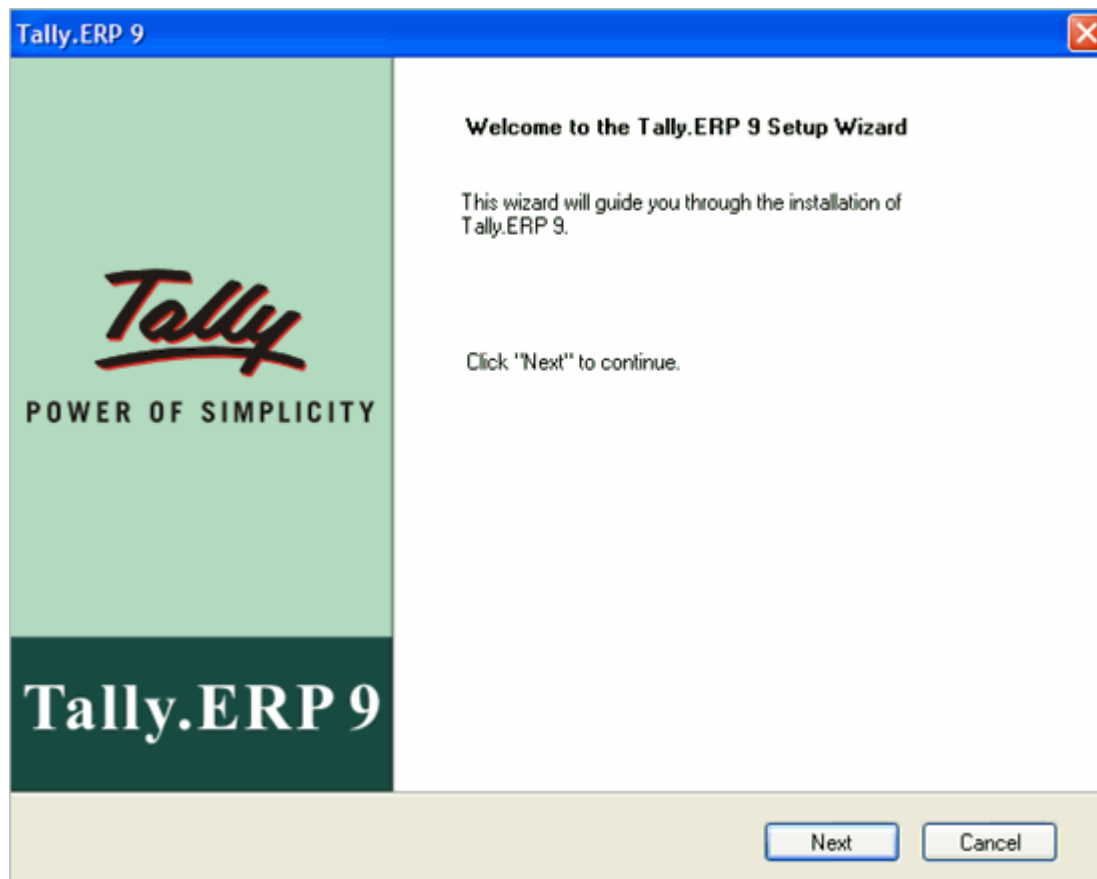
- Double click the **install.exe** icon on the CD.

### Method 2:

- Click **START** from Windows.
- Select **RUN**.
- TYPE **<CD drive>:\INSTALL**.
- Press **ENTER**.

Follow the instructions displayed on your screen to proceed with the installation of Tally.ERP 9.

1. The **Tally.ERP 9 Setup Wizard** screen is displayed as shown.



2. Click **Next** to continue with the installation

3. The Tally.ERP 9 Setup screen appears

**3.1** In the Programs section check select Tally.ERP 9.

**3.2** In the **Tally.ERP 9 Setup** section, you can accept the default directories as shown or click on the buttons provided next to the respective text boxes to change the path of **Application Directory**, **Data Directory**, **Configuration Directory**, **Language Directory** and **License Directory**.

**3.2.1 Application Directory** - The program files reside in this directory.

**3.2.2 Data Directory** - by default Tally.ERP 9 data is stored in C:\Tally.ERP 9\Data. During the installation process, the wizard detects and retains the data path of previously installed version of Tally.ERP 9.

**3.2.3 Configuration Directory** - by default the configuration files reside in the application directory.

**3.2.4 Language Directory** - by default the Language files with the extension .dct are stored in the application directory.

In the **License Details** section, by default **Use Local License File** is selected.

**License Directory** - by default the license file resides in the license directory.

---

Ensure that an earlier version of **Tally.ERP 9 Silver** is activated. Enter the path of the license file in **License Directory**. This enables you to run multiple instances of **Tally.ERP 9 Silver** on the same computer using a single license file.

**Tally.ERP 9 Setup**

**Programs**

Tally.ERP 9

License Server

**Description**

Installs Tally.ERP 9 on your machine.

**For Multi-User**

- Install License Server Program on identified machine
- Select "Use License Server" and specify License Server details
- Needs License Server 3.0 and above

**For Single-User**

- Don't install License Server Program
- Select "Use Local License File" and specify License Directory

**Tally.ERP 9 Setup (1 of 2) Upgradation**

**Application Directory**

C:\Tally.ERP9

**Data Directory**

C:\Tally.ERP9\Data

**Configuration Directory**

C:\Tally.ERP9

**Language Directory**

C:\Tally.ERP9\Lang

**License Details**

Use Local License File  Use License Server

**License Directory**

C:\Tally.ERP9

© Tally Solutions Pvt. Ltd., 1988-2009.

< Back Next Cancel

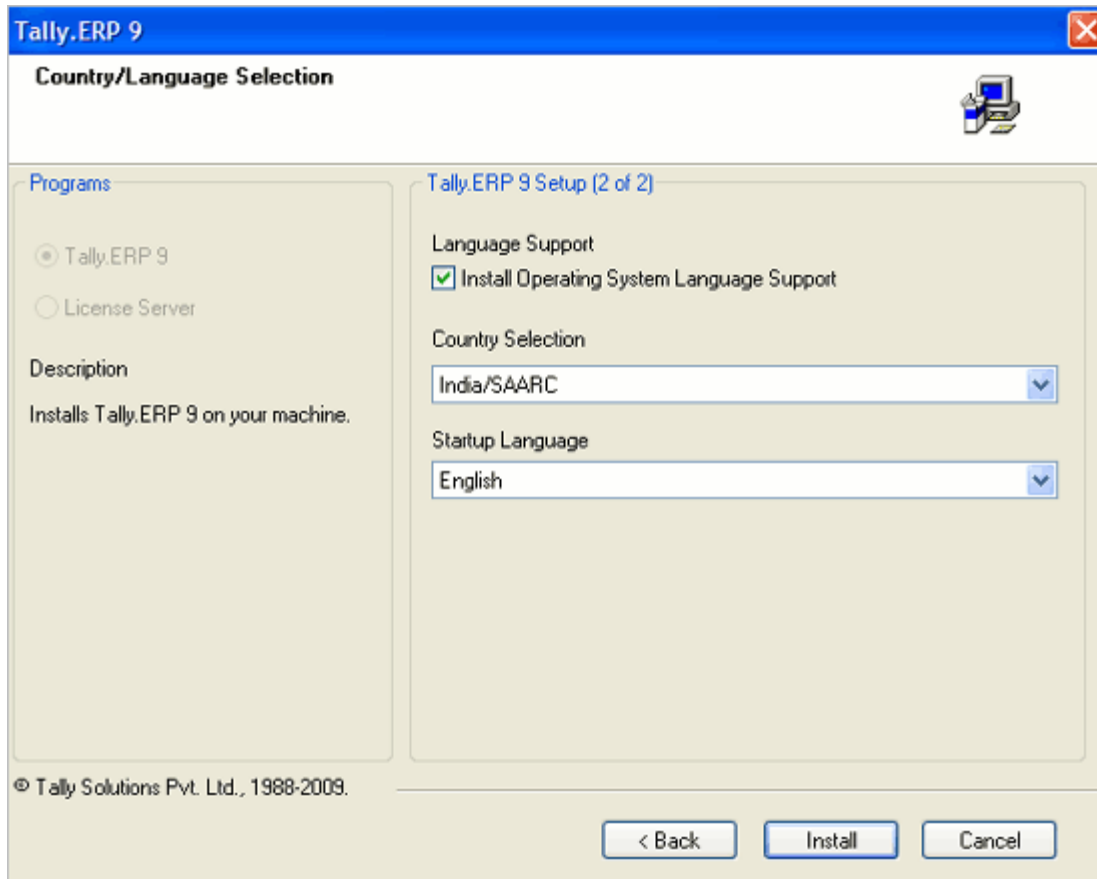
4. Click **Next**.

5. In the **Country/Language Selection** screen, check **Install Operating System Language Support** to install Tally.ERP 9 with multi-lingual support.

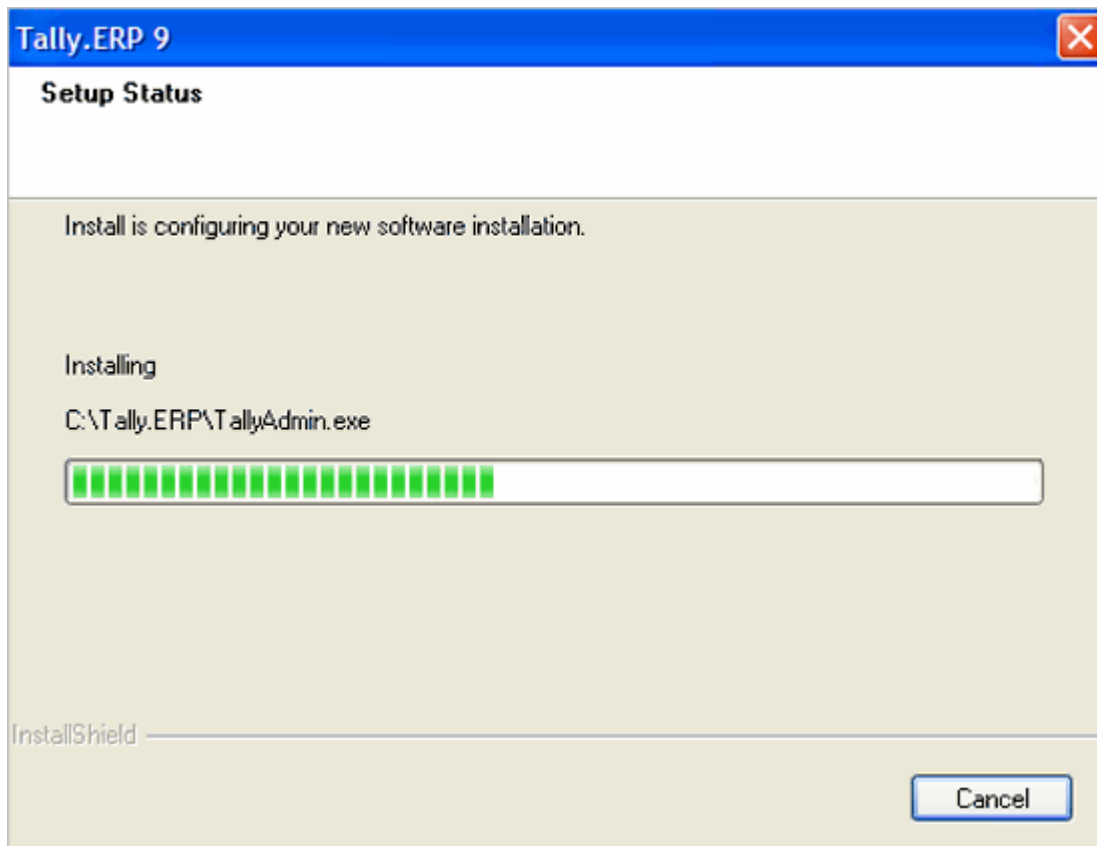
---

**Note:** To use Tally.ERP 9 in English only, uncheck Install Operating Systems Language Support

6. By default, **India/SAARC** appears in the **Country Selection**. Select **Others** if you are not residing in **India** or any of the **SAARC** countries.



7. Click **Install**.
8. The **Setup Status** screen is displayed as shown.

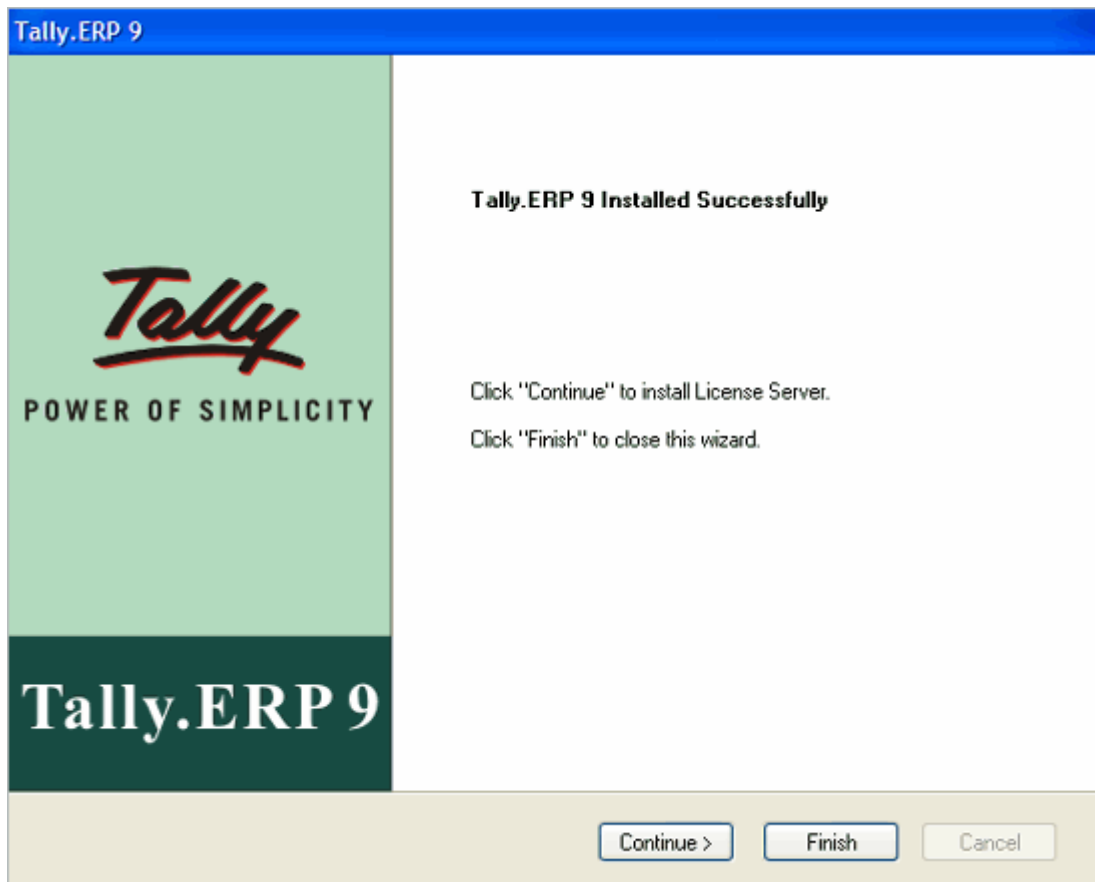


9. You will be prompted for the language support files in the **Files needed** screen, insert operating systems CD in the drive or click **Browse** and select the **i386** folder where the required language support files reside on your computer.
10. Click **OK** to install **Language Support**.

---

**Note:** In case you click Cancel or do not have the operating system CD, The language support will not be available.

11. In the installer screen click **Finish** to complete **Tally.ERP 9 Setup**.



11. Click **Finish** to complete **Tally.ERP 9 Silver Installation**.

To start the **Tally.ERP 9** application, double click the **Tally.ERP 9** icon on the desktop.

---

**Note:** While installing Tally.ERP 9 Silver (Single User), ensure that you have not checked My License Server is running at and do not provide the IP Address or the Name of the Server and the Port Number.

